The logo features a black background with a repeating pattern of stylized butterflies in various shades of cyan and light blue. The butterflies are scattered across the frame, some overlapping. A semi-transparent, light gray rectangular box is centered horizontally and vertically, containing the text "Michigan Butterfly Monitoring Network" in a black, sans-serif font. The text is arranged in two lines: "Michigan Butterfly Monitoring" on the top line and "Network" on the bottom line.

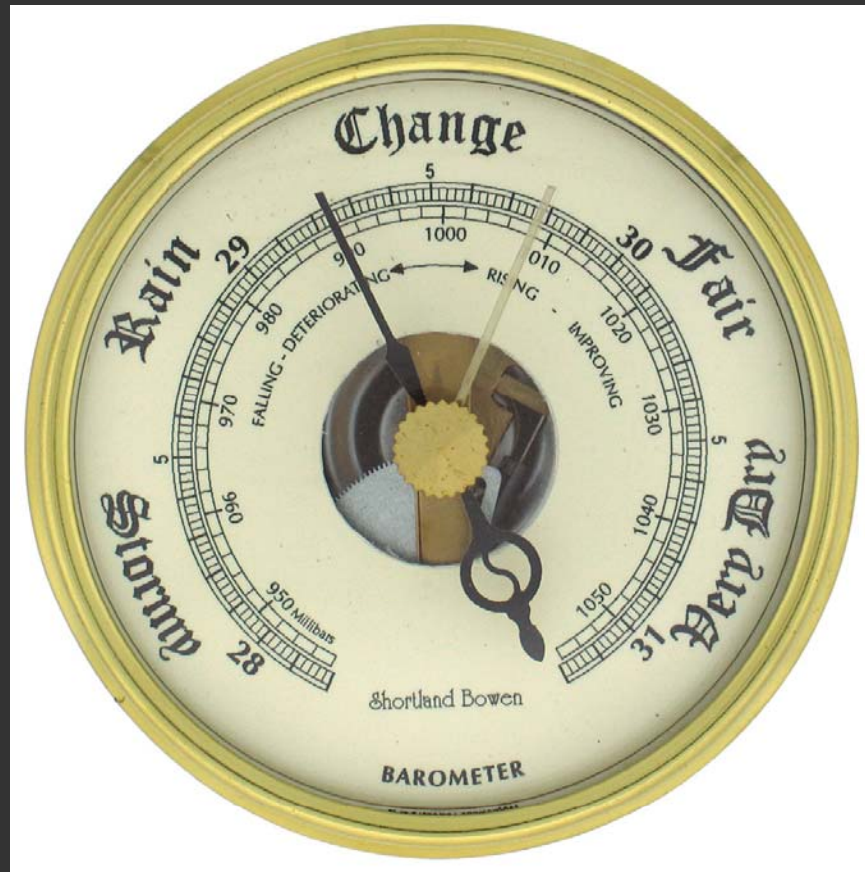
Michigan Butterfly Monitoring
Network



Imperiled Butterfly Conservation Management –IBCM



Butterflies as Barometers



Why Butterflies? Why Now?

Karen Kramer Wilson

Biological Research Coordinator

Living Invertebrate Specialist



Kalamazoo
Nature Center



Research



Conservation

Education



Trails



Barn Trail
0.2 mile Easy
Old field into new forest
Songbirds, small mammals



Beech Maple
0.7 mile Moderate
Old growth beech maple forest
Spring wildflowers, owls, turkeys, deer



Bluebird Trail
2.7 miles Moderate/Difficult
140-acre restored prairie
Songbirds, prairie flowers, insects



Cooper's Overlook
0.2 mile Moderate
Ridge overlooking Trout Run
Spring wildflowers, fall foliage, hawks



Fern Valley
0.7 mile Difficult
Sugar maple grove and a secluded pond
Wildflowers, deer, turkeys, chipmunks



Green Heron Ravine
0.7 mile Moderate
Fields, young forest, shallow ponds
Woodpeckers, songbirds, frogs



Habitat Haven
0.6 mile Easy
Accessible, habitat overlooks
Turtles, frogs, butterflies, animal tracks



Pioneer Woods
1.0 mile Moderate
Young forest, overgrown, farm fields
Small mammals, deer, frogs



Prairie Pathway
0.5 mile Easy
Open restored prairie
Bluebirds, dragonflies, soaring raptors



Raptor Ridge
0.4 mile Difficult
Overlook of Kalamazoo Valley
Soaring raptors, fall colors



Ridge Run
0.6 mile Moderate
Overlook of the Pin
Birds, squirrels, reptiles



River Walk
0.2 mile Easy
Boardwalk to Kalamazoo River
ducks, spicebush, aquatic insects



Source Pond Trail
0.7 mile Moderate
Old growth forest, large pond
Woodpeckers, spring wildflowers, turtles

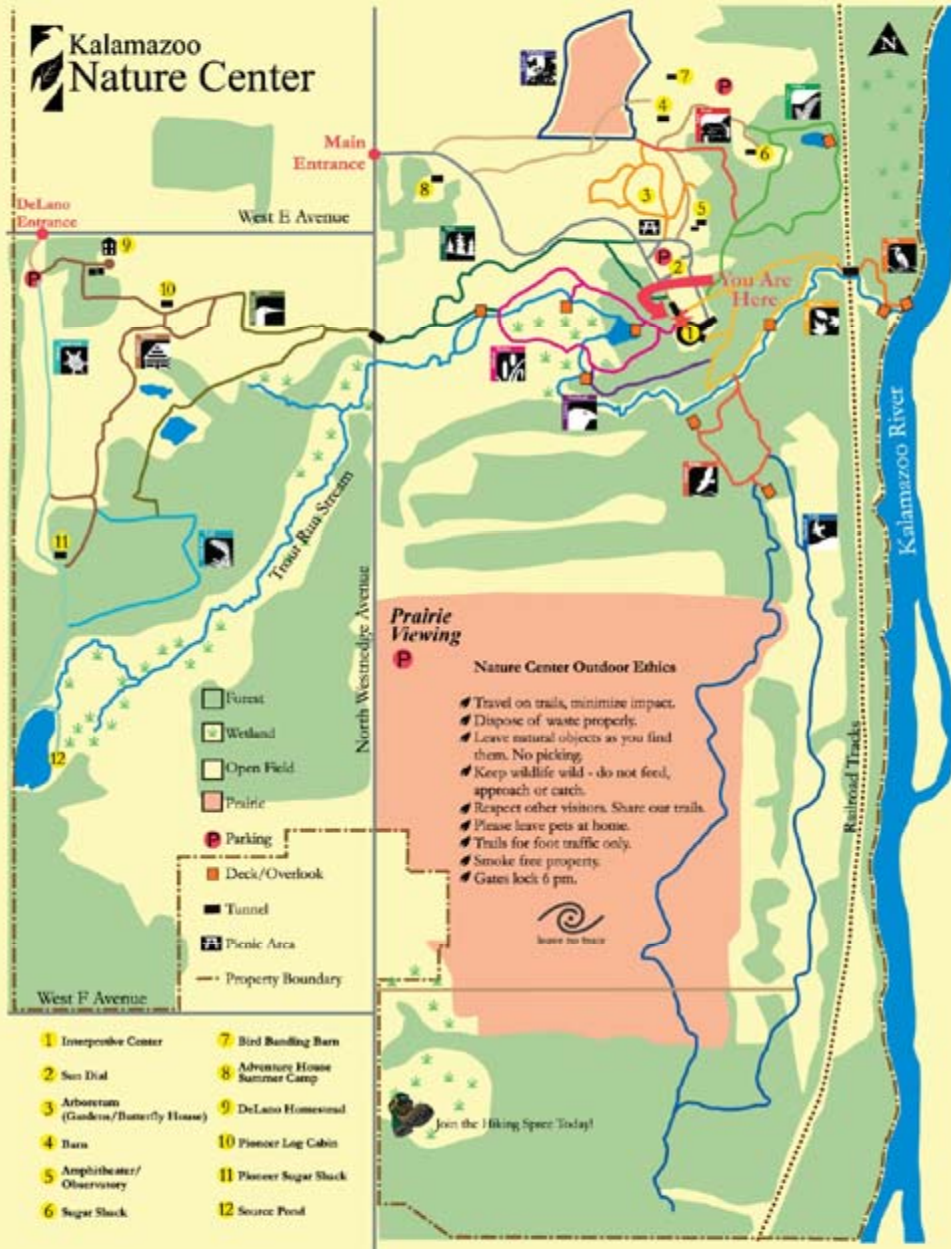


Trout Run Trail
0.4 mile Moderate
Secluded trail along stream
Woodpeckers, small mammals



The Kalamazoo Nature Center is a not-for-profit organization whose mission is to inspire people to care for the environment by providing experiences that lead them to understand their connections to the natural world.

Kalamazoo Nature Center



- | | |
|---------------------------------------|-------------------------------|
| 1 Interposive Center | 7 Bird Banding Barn |
| 2 Sun Dial | 8 Adventure House Summer Camp |
| 3 Arboretum (Gardens/Butterfly House) | 9 DeLano Homestead |
| 4 Barn | 10 Pioneer Log Cabin |
| 5 Amphitheater/Observatory | 11 Pioneer Sugar Shack |
| 6 Sugar Shack | 12 Source Pond |















Why Now?

- Sudden and Rapid Declines
- Worldwide
- Regionally

Regal Fritillary- *Speyeria idalia*



Regal Fritillary – *Speyeria idalia*

- Extirpated in 15 states
- Imperiled in 5
- State Endangered in 4 states including MI, NY, OH, WI
- Threatened in IL
- No Federal Status
- Icon of Prairie Restoration



Getting the Word Out



SUMMER FUN FOR YOUTH GROUPS!



Day Care,
Homeschool,
Church,
Scouts,
Summer Recreation,
& More!



The Nature Center is the perfect way for your group to gain a brand new appreciation for their place in the natural world.

Allow KNC's professional staff to involve your group in one of our many exciting guided programs. Don't see what you want? Ask for a custom-designed class!

Scouts can earn badges! See the website at www.NatureCenter.org for more program details and special fees.

Interested in exploring the site on your own? You can visit our interactive exhibits, enjoy the seasonal butterfly house and garden, and meet young farm animals at the barn.

Our self-guided hiking trails invite you to discover 1,100 acres of woods, meadows, and wetlands.



Barn Critters

Who lives in a barn? It's not just the usual farm animals! Small wild animals also use the Nature Center's big barn. Meet real farm animals and learn about their favorite foods. Pet our gentle pony, furry bunny, and goofy goat. Then explore the area in search of the wild animals that find food and shelter in various nooks and crannies. Ages 4-7.



Oregon Trail & Its Wild Wonders

Students will choose which possessions to take in the limited space of a covered wagon. They will experience walking a dusty prairie trail and have the thrill of encountering new plants and animals. A team-building game will help them cross an imaginary river. Ages 6-10.



Fossil Hike

Fossil seashells and corals in Michigan? You bet! Learn how fossils are formed and why we find them here. Hike to the Nature Center's gravel pit and search for these buried treasures from ancient times. Ages 6-10.

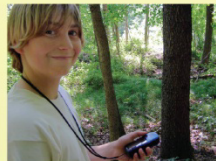
Wonderful Wetlands

Hike to a marsh or river bottomland and learn about some fascinating wetland plants and animals. Then catch some amazing critters from a pond or stream and observe their adaptations to a watery world. Ages 6 and up.



Pioneer Chores & Child's Play

Life on a 19th-century Michigan farm was hard work, but children did have time to play! Youngsters will do chores at a log cabin and explore an old farm house. Then they can test their wits with some old-fashioned puzzles and try their motor skills with hoops and stilts. Ages 6-10.



Survival Skills

If your children were lost in the woods, would they know what to do? We'll help your kids learn basic "lost proofing" skills, including how to make a shelter or how to lay a fire. We'll also practice basic map and compass reading. Ages 8-12.



Geocaching - "High Tech Treasure Hunt"

Search for treasures at the Kalamazoo Nature Center! Geocachers use a Global Positioning System (GPS) and the Internet to assist them in navigating through areas in search of hidden objects. Learn the basics of the GPS unit and then test your skills by using it to find treasures hidden around the Nature Center!

Incredible In

They live under favorite flowers others prefer n have around! A



ur
food,
eat to



Kalamazoo Nature Center Earth Day Celebration

Saturday, April 17

Free Admission Day

9 am – 5 pm Trails and Interpretive Center Open

9 am – 5 pm Exhibit "My Garden" by K. Lynn McFarlen, Glen Vista Gallery, meet the artist 12-2pm

10 – 11 am Garlic Mustard Pull – Volunteers needed! Bring your gardening gloves

10 am – 4 pm Community Information Tables

10 am – 4 pm Camp Open House & KNC Program Information

12:30-1:30 pm Garlic Mustard Cook-off. KNC Staff will cook up some tasty Garlic Mustard treats! Pick up your copy of *Garlic Mustard: From Pest to Pesto*

2 – 3:30 pm Guest Speaker, Nicolette Hahn Niman author of *Righteous Porkchop* Coopers Glen Auditorium

3:45 – 5 pm Book signing by Nicolette Hahn Niman Glen Vista Gallery



Naturalist-led sculpture garden & Arboretum tours throughout the day

Earth Day/Free Admission Day is a KNC 50th Anniversary event. For a full schedule of events visit www.NatureCenter.org

Kalamazoo Nature Center
7000 N. Westnedge Ave. Kalamazoo, MI. 49009

Where to Start

- Who
- What
- When
- Where
- Why



Expectations/Hopes

- Stick with it – Multiple Seasons per site
- 1 site per Monitor
- Minimum of 6 Runs per Season
- Establish a route
- Submit Data promptly
- Good Citizen – NO COLLECTING



Site Assignment

- Close to home
- Personal preference
- We have suggestions – link to other research
- Set Path – May take you through more than one habitat



Basics of Field Work

- Safety First - Pair Up
- Spotter/Monitor
- “Brain” or Recorder



Don't Get Discouraged

- May take years to get a baseline
- Learning Curve!
- Learn BFs at your site and across season





Mourning Cloak



Row of blue spots
(may be hard to see)



Distinctive yellow edge

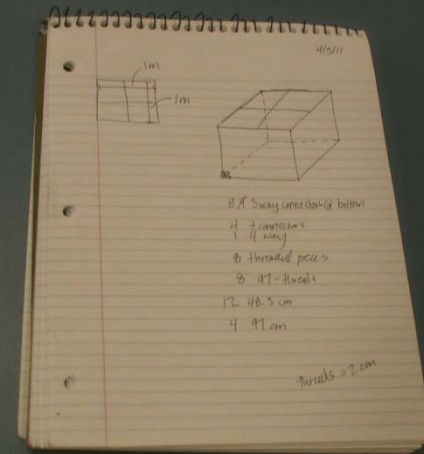
Typically the first butterfly of spring – overwinters as adult







Kalamazoo College









***Connecting Today for
Conservation Tomorrow***